



North Johnson Creek Trail Project

Community Meeting
March 12, 2020



Agenda

- Welcome
- Introductions: The Team
- Grant Overview
- Meeting Purpose and Goals
- Overview of trail planning project
- Overview of trail planning findings
- Introduce trail alignments
- Trail planning timeline
- Questions/discussion
- Community feedback activity
- Summary/review
- Next Steps

Metro Nature in Neighborhoods Grant Habitat Restoration & Trail Planning

Johnson Cr. between SW 90th and 95th Avenues.

Partners: NFSG, TRWC, West TV School, Catlin Gabel School,
Providence, CWS, WTA, WA Co., THPRD, ECO

Professional Services: Habitat Restoration NW & Cascade Environmental Group



Meeting Purpose & Goals

- Provide a project update
- Present trail alternatives under consideration
 -
- Receive feedback to consider for trail alternative selection and refinement

Metro Nature in Neighborhoods Grant Award Applicability



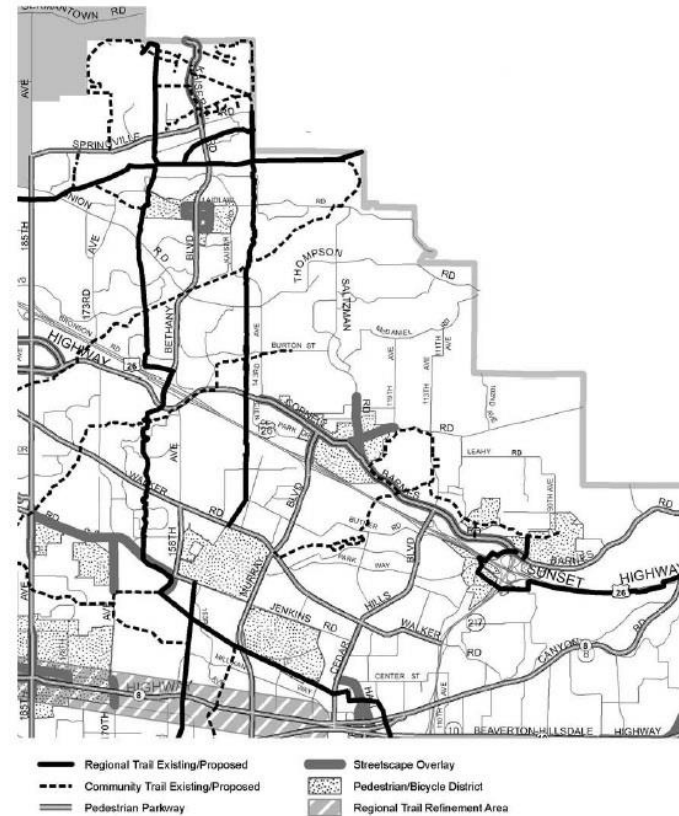
Provides Users with a Nature Experience



**Serves a TO & Extended Community
That are Deficient in Trails**

Pedestrian System Map for Westhaven

The Pedestrian System Map 4 of 8 is incorporated into the Washington County Transportation System Plan:



Features on this map are shown in bold solid, dashed or patterned lines; as displayed in the legend. Other features shown are for reference only, and are not affected by this exhibit.

For proposed regional and community trails identified, refer to community plan and/or trail master plan documents to determine additional details regarding specific trail alignment

Source: A-Engrossed Ordinance No. 783, Exhibit 4, August 26, 2014, Page 11 of 40

Serves the Immediate TO Pedestrian District and surrounding Community with Recreational and Reginal Trail Connection Opportunities.

The Stream Corridor

SW 90th to 95th Avenues



Culvert @ SW 90th
N. Johnson Cr Headwaters
Under Catlin Gabel School



Interior



WA County TSP Regional Trail
Westhaven Neighborhood's
Boardwalk & path to Sunset
Transit Station, Providence and
Future station area community

Habitat Restoration



East End Restoration
Catlin Gabel School
at SW 90th Ave



Community Invasive Removal and Tree
Planting Events



West End Restoration
ECO & Rachel Carson Env School
at SW 95th Ave

Habitat Restoration (East End at SW 90th Ave)

Partners: Catlin Gabel School, Providence St. Vincent,
Tualatin River Watershed Council, Habitat Restoration NW
and funded by OWEB.

Removed Invasive and Installed Native Plants

- ▣ Worked on 2.5 acres
- ▣ Removed English Holly, English Ivy, Invasive Cherry, Blackberry
- ▣ Removed 25 truck loads of debris
- ▣ Installed over 2000 native trees and shrubs
- ▣ Included hundreds of Catlin students and community volunteers

Habitat Restoration (West End at SW 95th Ave)

Ecology in Classrooms & Outdoors (ECO)

Beaverton's Rachel Carson School of Environmental Science

Enhancement

Invasives Removed - 1 acre:

English ivy, holly,
Himalayan blackberry

Native Plants:

1560 planted
500 Trees
1060 Shrubs



Student Hours

180 students

4 visits each year

3 hours per visit

3 years

= **6,480 hours!**



TSWCD Announcement



Participants receive a FREE Weed Watchers Guide and Boot brush!

Register online at <https://www.swcd.net/events/list/>



Concerned about invasive weeds?
Attend a free Weed Watcher Workshop!

- Talk with weed experts.
- Discover how to help.
- Learn from live samples.
- Bring in mystery plants for identification.
- Receive a free field ID book.

2020 Weed Watcher Workshops

April 21 | 6-8pm
Tualatin SWCD Office
7175 NE Evergreen Pkwy #400
Hillsboro, OR 97124

April 29 | 6-8pm
Tualatin Public Library Community Room
18878 SW Martinazzi Ave.
Tualatin, OR 97062

May 12 | 6-8pm
City of Beaverton Griffith Bldg Rm 150
4755 SW Griffith Dr.
Beaverton, OR 97005

May 20 | 6-8pm
Banks Public Library Community Room
42461 Market St.
Banks, OR 97106

May 27 | 6-8pm
Tualatin River National Wildlife Refuge
19255 SW Pacific Hwy.
Sherwood, OR 97140

Register at <https://www.swcd.net/events/list/>



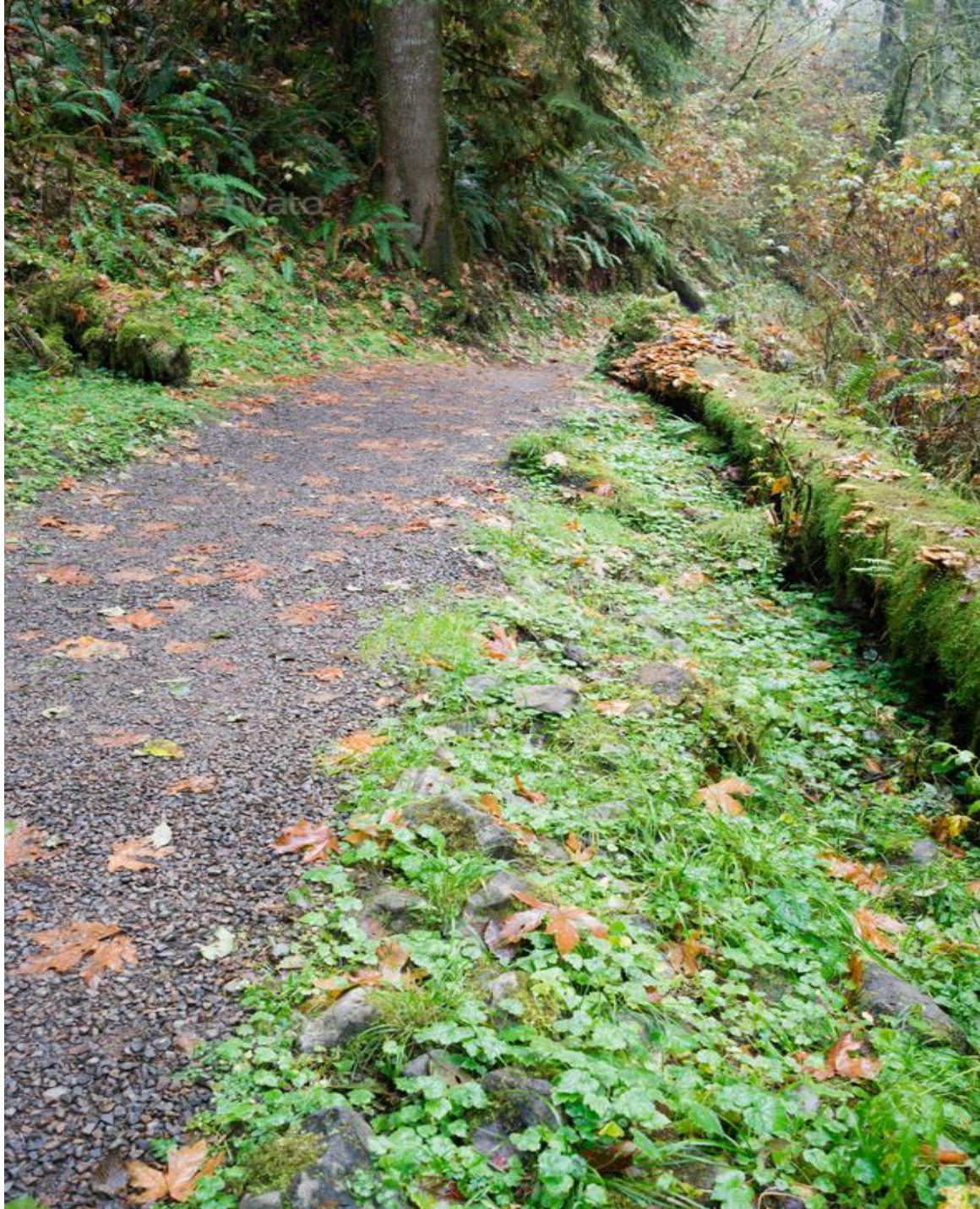
Habitat Restoration Progress



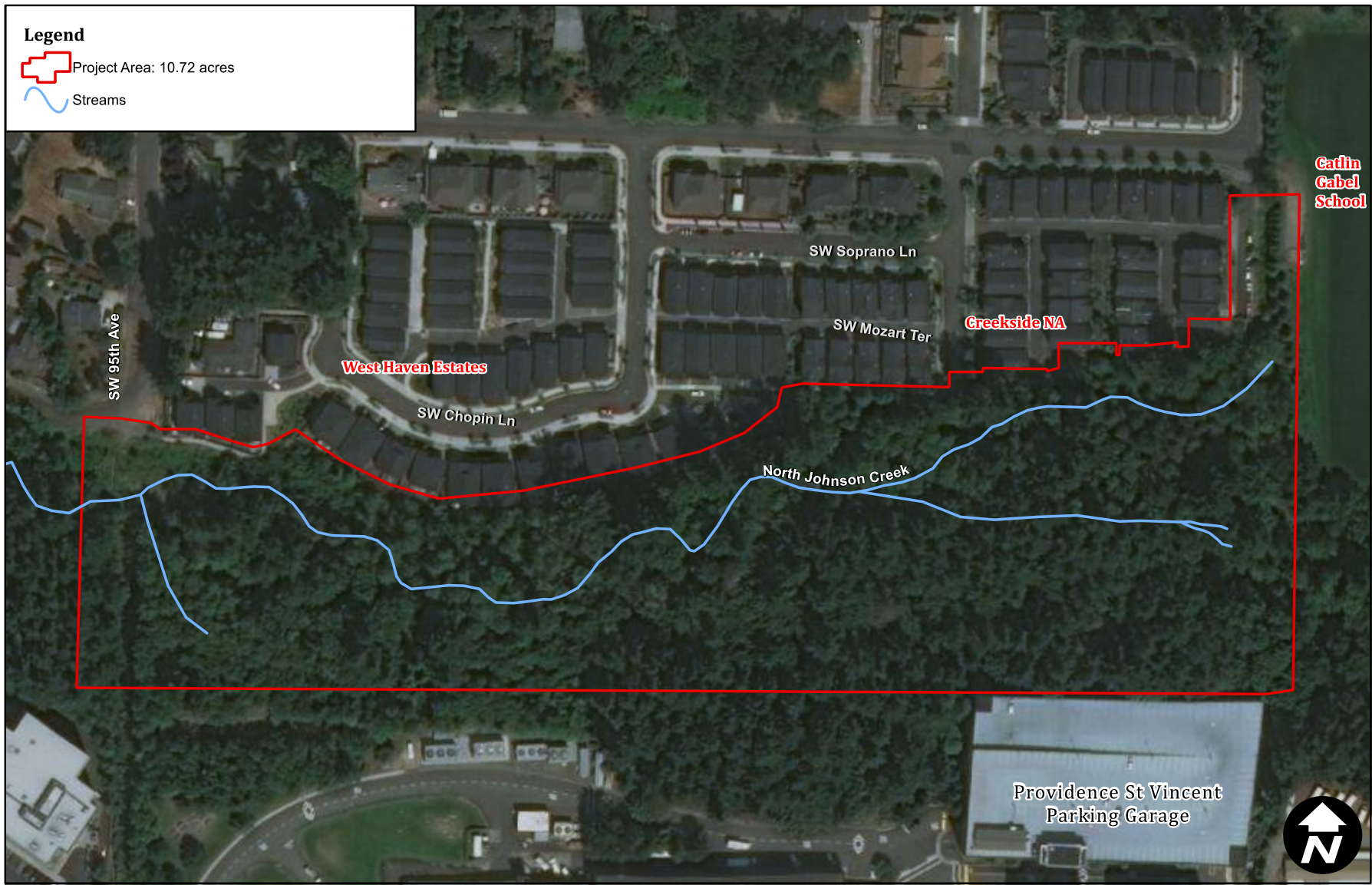
East End (SW 90th)



West End (SW 95th)

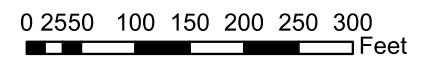


Overview of Project



Date: 3/5/2020
Scale: 1 inch = 150 feet
Data Source: ESRI, 2018

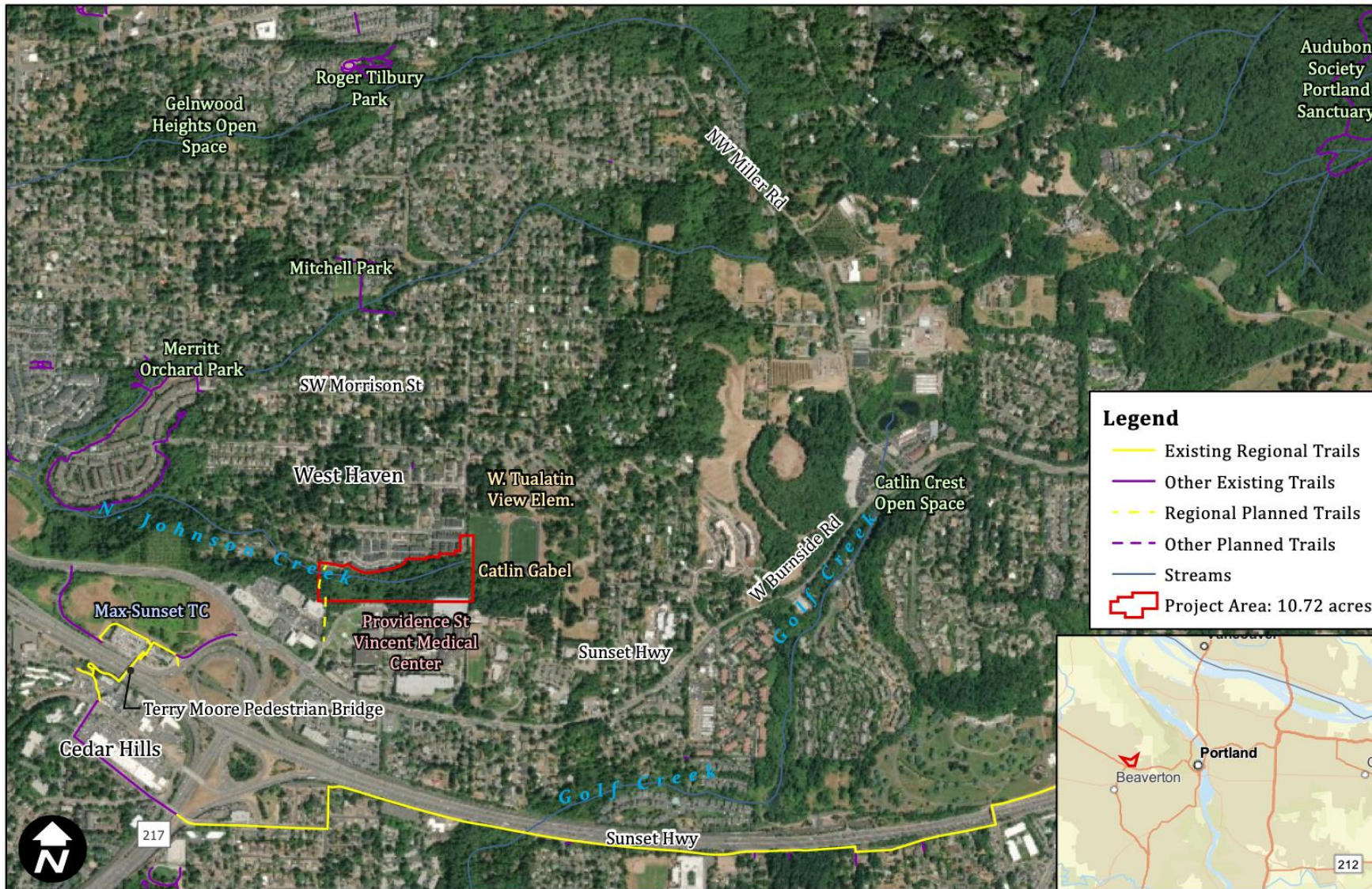
Site Aerial



North Johnson Creek, Phase I Trail Planning



Overview of Findings

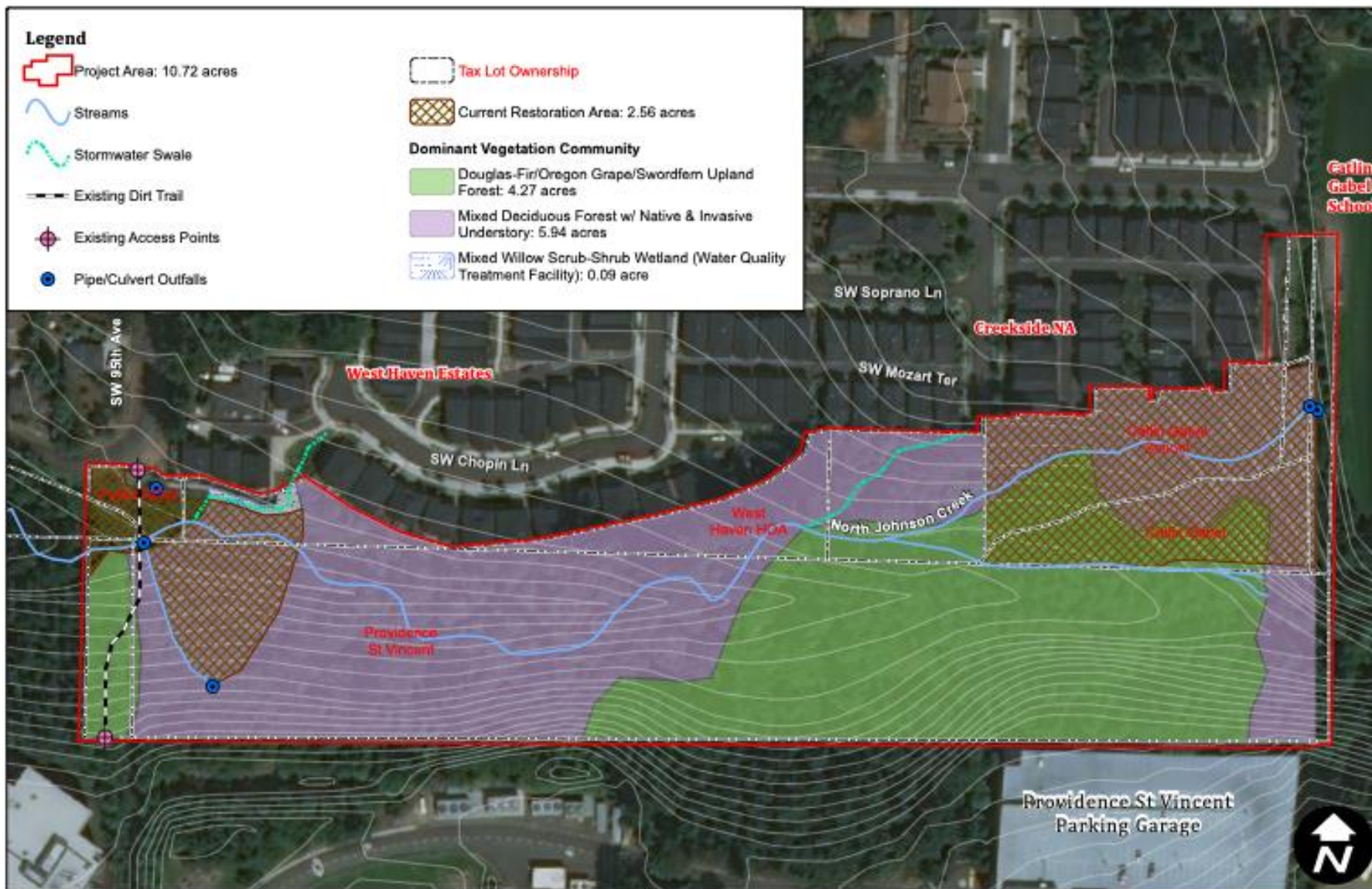


Date: 1/9/2020
 Scale: 1 inch = 150 feet
 Data Source: ESRI, 2018

Vicinity Map

Westhaven: Nature Near the City

- Open Space/ Parks
- Habitat Corridors
- Trails/Connections
- SW 95th Ave Trail Connections:
 - Sunset Transit Center
 -
 - SW Barnes Rd
 -
 - HWY 26 Ped. Bridge
 -
 - Cedar Hills (Providence, retail/commercial)
 -
 - Regional Trails “Beaverton to Milwaukie Trail”

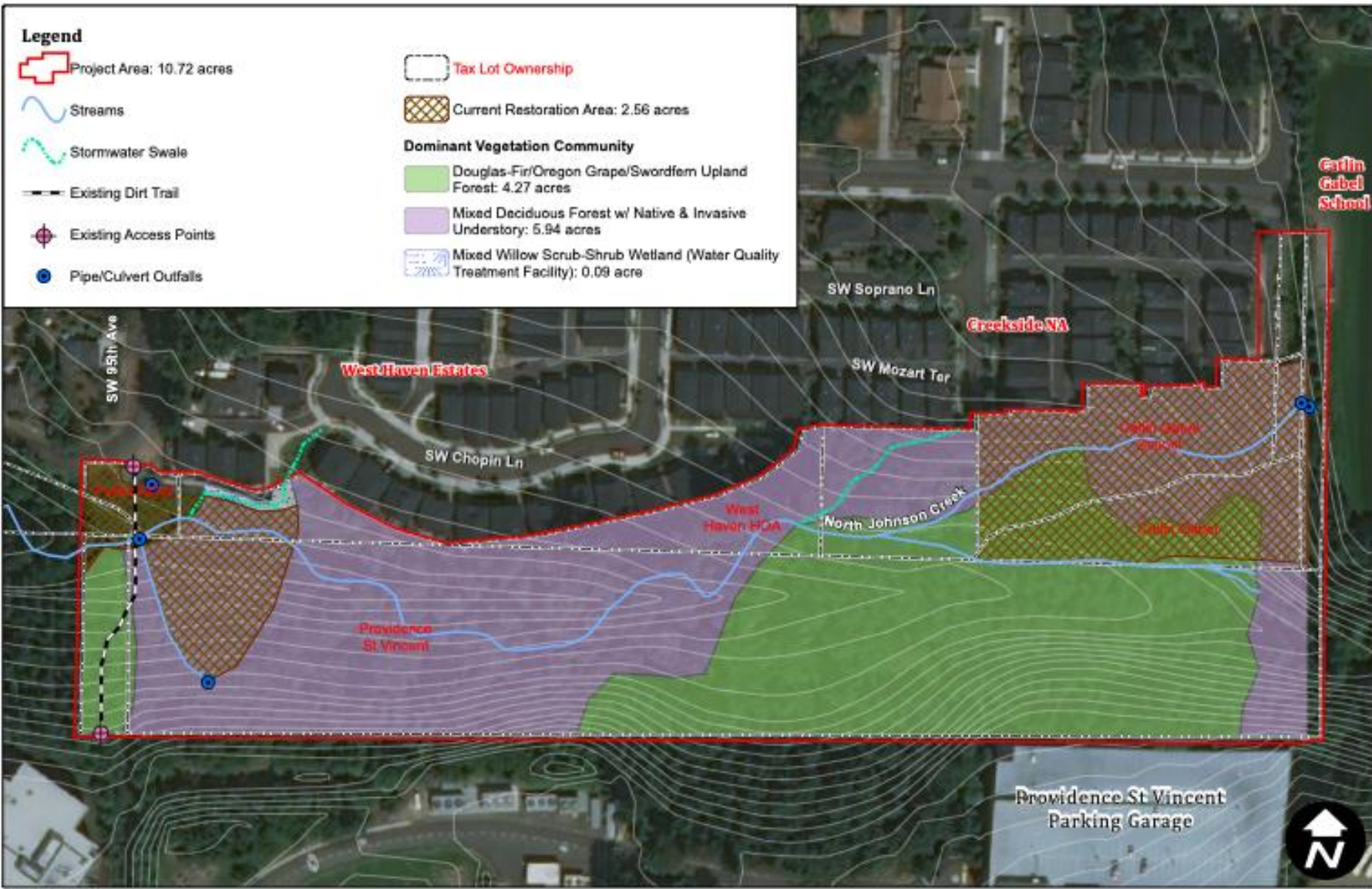


Date: 1/9/2020
 Scale: 1 inch = 150 feet
 Data Source: ESRI, 2018

Existing Conditions

Neighbors

- Creekside at Westhaven
- Westhaven Estates
- Providence St. Vincent
- Catlin Gabel School
- Public R.O.W.



Date: 1/9/2020
 Scale: 1 inch = 150 feet
 Data Source: ESRI, 2018

Existing Conditions

Habitat

- Vegetation communities
- Current restoration areas
 - Supported by Tualatin River Watershed Council and NFSG
 - One managed by Habitat Restoration NW
 - One managed by Ecology in Classrooms Outdoors (ECO)

Existing Vegetation



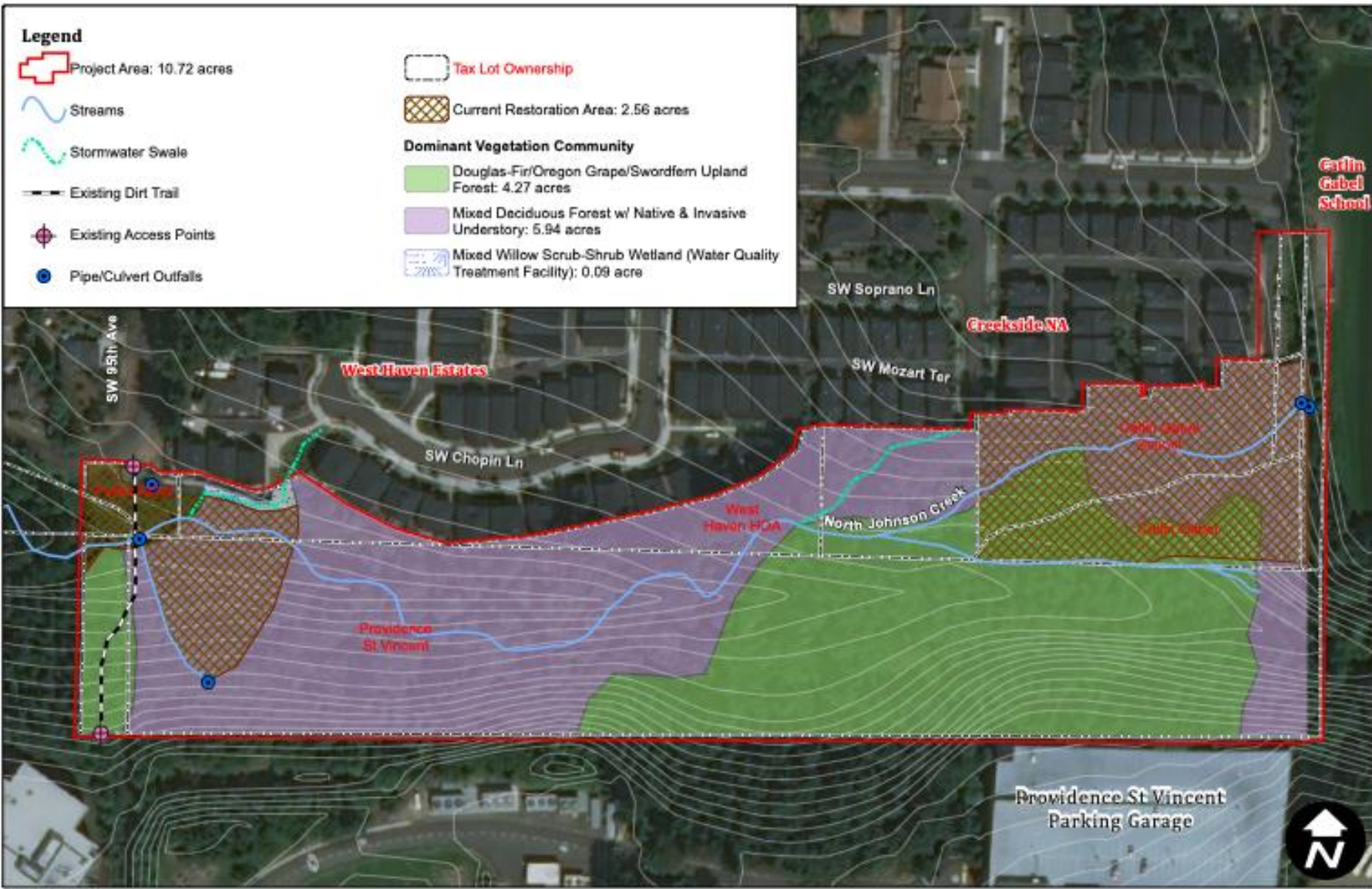
Typical vegetation north of creek



Typical vegetation north of creek



Typical vegetation south of creek

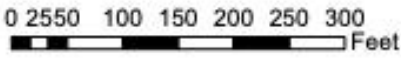


Hydrology

- Headwaters of Johnson Creek
- Seasonal stream
- Two stormwater detention basins: SW Chopin Lane and SW Mozart Terrace
- Springs
- Storm pipes from Leahy Rd, Providence, Catlin, SW 90th and SW 95th

Date: 1/9/2020
 Scale: 1 inch = 150 feet
 Data Source: ESRI, 2018

Existing Conditions



North Johnson Creek, Phase I Trail Planning



Headwaters culvert



Incised channel



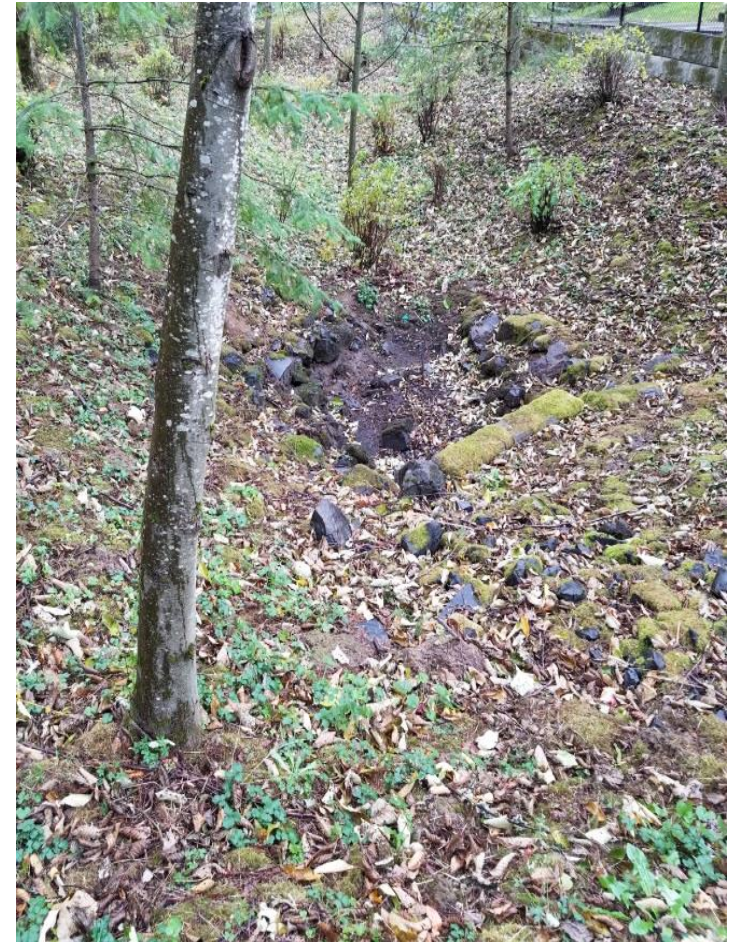
Creek channel



Stormwater basin at Chopin Ln.



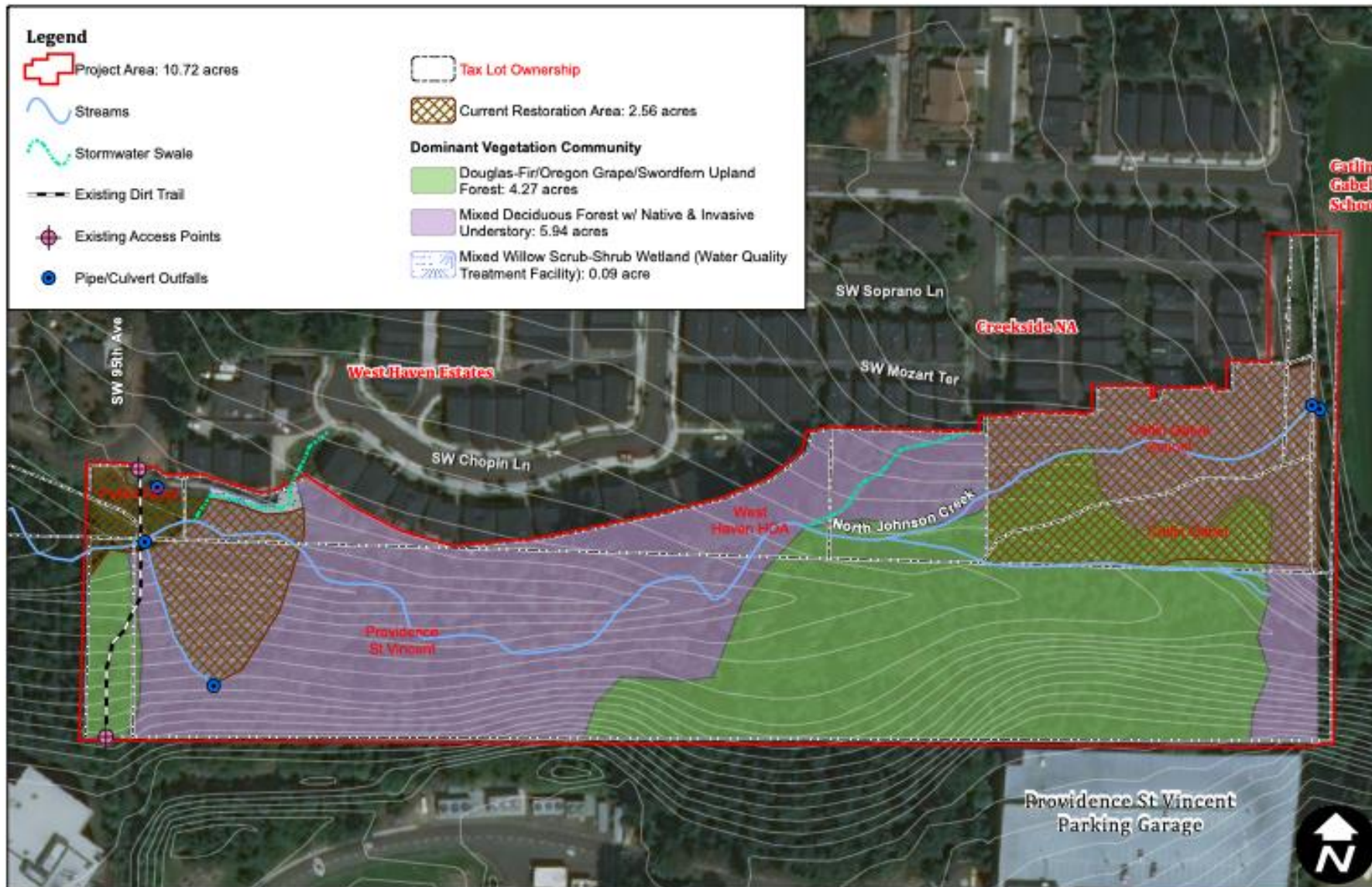
Stormwater swale at Chopin Ln.



Stormwater basin at Mozart Tr.

Existing Access

- Limited by vegetation, topography, and fences.
- 95th Ave. Regional Trail (N-S)
- North end: community-maintained, boardwalk
- East end: informal trail from Catlin along Providence's northern property line
- No current evidence of camping



Date: 1/9/2020
Scale: 1 inch = 150 feet
Data Source: ESRI, 2018

Existing Conditions

Trail Alternative 1

Alignment

- North of Creek
-
- Landowners: Westhaven Estates, Providence, Catlin
-
- Subdivision approval conditions
-
- Boardwalk/bridge over stormwater facilities
-
- Constrained between fence and Cr
-
- Dense vegetation clearing required
-
- No tree removal > 6" dia.
-
- Remove/transplant some restoration plantings



Date: 3/12/2020
Scale: 1 inch = 150 feet
Data Source: ESRI, 2018

Proposed Trail Location

North Johnson Creek, Phase I Trail Planning

Trail Alternative 2

Alignment

- Primarily south of Creek
- Landowners: Providence, Catlin Gabel
- Boardwalks/bridges over creek and swale crossing points
- No dense vegetation
- No tree removal over 6" diameter



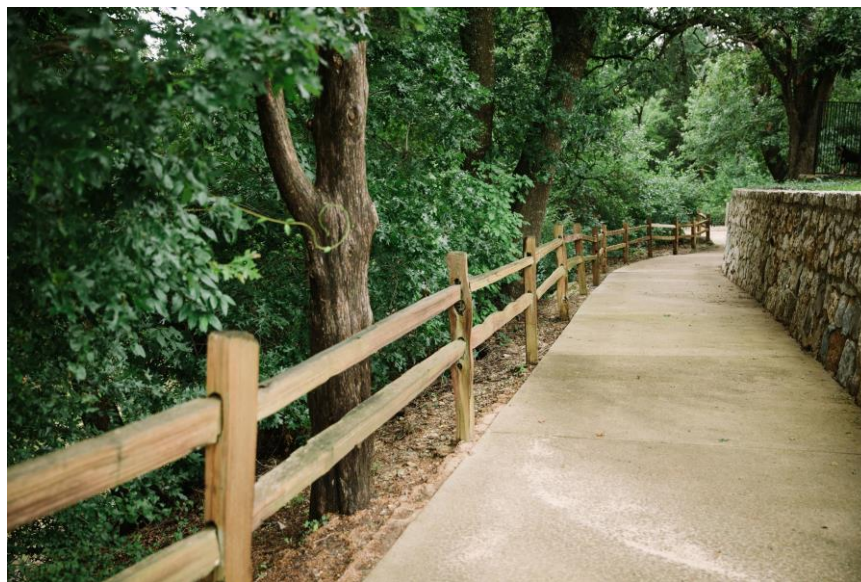
Date: 3/12/2020
Scale: 1 inch = 150 feet
Data Source: ESRI, 2018

Proposed Trail Location

Design Elements: Typical Examples



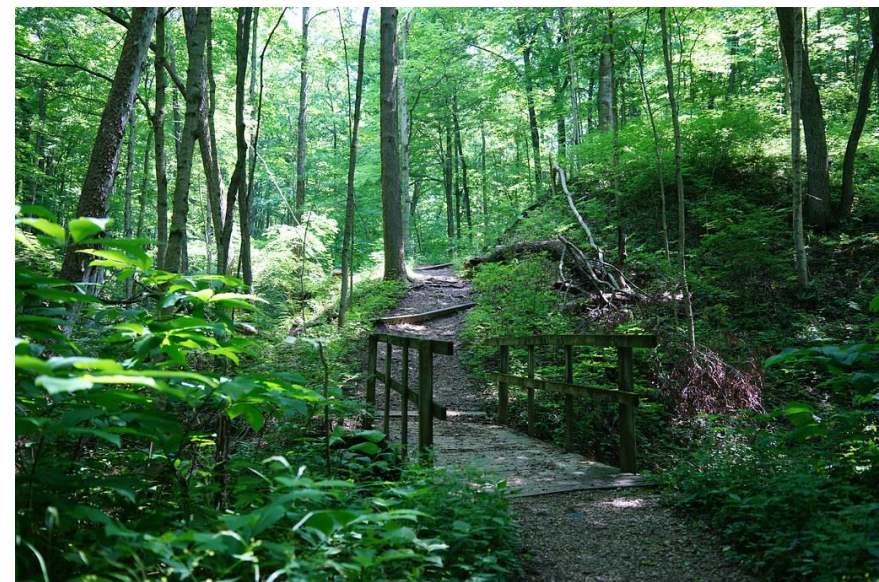
Gravel-surfaced trail



Split rail fence



Boardwalk



Bridge



Design Considerations

- Provide a nature trail with minimal impact on the valued natural resource.
-
- Plan for reasonably safe use
-
- Provide users with a quality nature experience
- Provide wildlife viewing opportunities
- Design, construction, and maintenance costs



Natural Resources Considerations

- Plan to minimize user impacts on natural resources
- Continue restoration and mitigate where possible;
 - Tree loss
 - Impact on vegetative understory
 - Effects on wildlife
 - Effect on water quality



Safety and Security Considerations

- Address privacy and security for adjacent properties
-
- User safety with special consideration around steep stream banks
-
- Constrain public stream access near crossings
-
- Utilize vegetation to discourage stream bank access
-
- Leverage use of indirect off-site lighting sources
-
- Visibility (vegetation density, visual access to people)



Further Study

- Wetland delineations
-
- Tree survey
-
- Topographic survey of steep areas
-
- Gather additional stakeholder and public
-
- feedback as the design and planning process continue
-
- Investigate funding sources

Project Timeline: Planning Grant

Spring 2020

Spring 2020

June 2020

Summer/
Fall 2020

Refine planning
and design of
alternatives



Select preferred
alternative



30% Construction
document
production



NFSG email
update



How to be involved?

- Provide written feedback on cards tonight
- Sign up for email updates
- Review on-line presentation and write feedback